

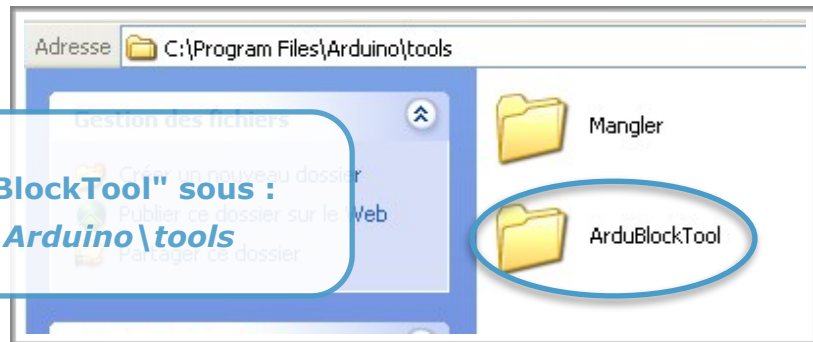
PLUGIN ARDUBLOCK



INSTALLER LE PLUGIN "ARDUBLOCK"

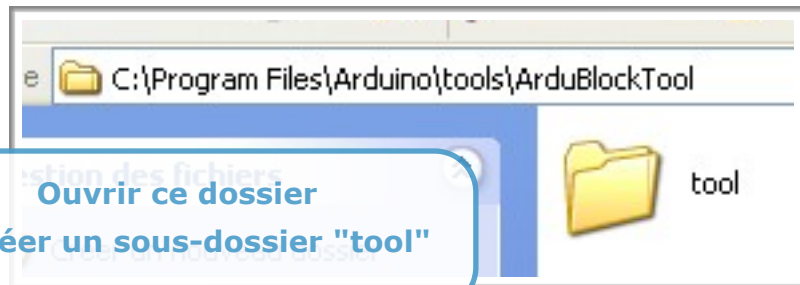
1

Créer un dossier "ArduBlockTool" sous :
C:\Program Files\Arduino\tools



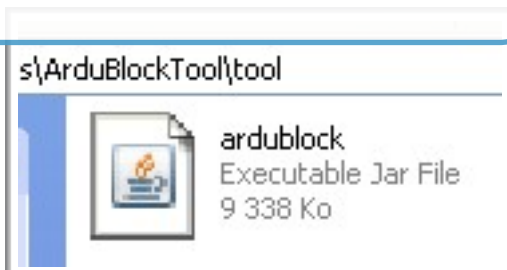
2

Ouvrir ce dossier
et créer un sous-dossier "tool"



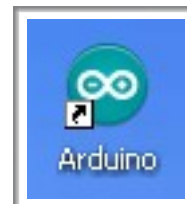
3

Copier/coller à l'intérieur de ce
dossier "tool" le fichier :
ardublock.jar



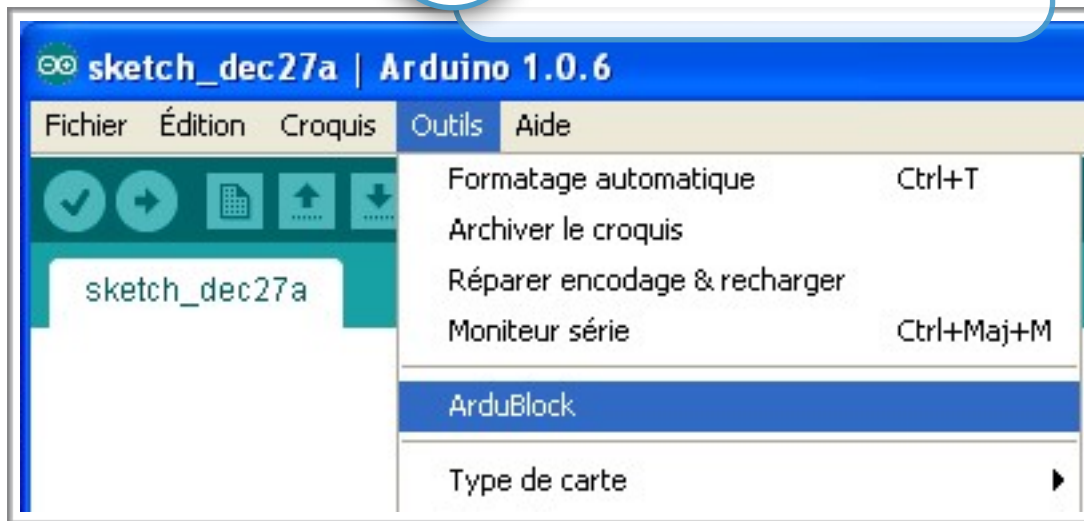
4

Lancer l'application "Arduino"



5

Outils-->"ArduBlock"



6

Créer votre programme !

